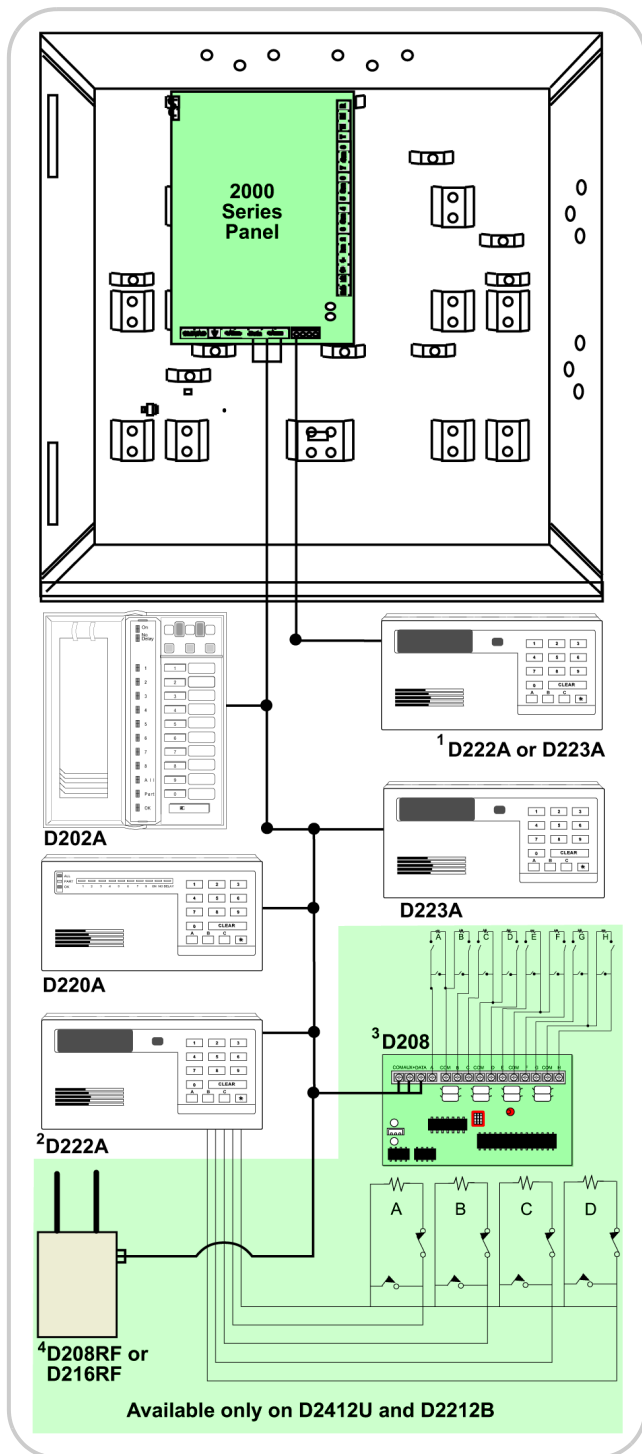


2000 Series Control/ Communicators

■ 2000 Series System Overview



1. Either the D222A/D222AW or D223A/D223AW Text Keypad can be used for local programming.

2. The D222A Keypad supports up to four hardwired expansion points when used with the D2412U or D2212B. The point expansion capability of the D222A is not supported by the D2212BE nor D2412UE Control/Communicators.
3. The D208 Hardwire Expander (only available with the D2412U or D2212B) supports up to eight hardwired expansion points.
4. The D208RF (only available with the D2412U or D2212B) supports up to eight wireless sensors and the D216RF (only available with the D2412U or D2212B) supports up to sixteen wireless sensors.

■ 2000 Series Features

- Local (with keypad or D5200 Programmer) and Remote (with RAM IV Remote Account Manager) programming capability
- Alarm memory, 2 programmable telephone numbers, and flexible routing for event reporting
- Modem IIIa² communications format
- 8 user passcodes with 3 authority levels
- 2 programmable on-board relay outputs (optional relays required)
- 3 software points
- Battery charging circuit and voltage suppression
- Easikey Access Control disarming capability

■ 2000 Series Basic Functions

Local and remote programming capability

The 2000 Series Control/Communicators can be programmed locally with the D222A or D223A Alphanumeric Command Centers. The D5200 is a portable programmer that allows quick and easy local downloading of programs. The RAM IV Remote Account Manager software allows a remote computer to contact the control/communicator for remote programming, diagnostics, and control.

Event reporting

The 2000 Series Control/Communicators can communicate over two phone numbers (each up to 19 digits long) for reporting events. The events can be grouped into eleven report groups for which each phone number can be designated as the primary or secondary destination allowing different types of events to be reported to different locations.

Modem IIIa² communications format

The Modem IIIa² communications format adds many reporting capabilities; such as, actual point number, actual user number, bypassed points, and opening/closing reports by up to eight users.

Passcodes and authority levels

The 2000 Series Control/Communicators allow up to eight user passcodes each from three to six digits long. Each passcode is assigned one of three authority levels to control the amount of access each user has to the various available functions of the system.

Programmable relay outputs

Two programmable on-board relay outputs allow up to 24 preprogrammed output functions to be executed.

2000 Series Certifications and Approvals

UL Standards	UL365 Police Station Connected Burglar Alarm Units and Systems UL464 Audible Signal Appliances UL609 Local Burglar Alarm Units and Systems UL985 Household Fire Warning System Units UL1023 Household Burglar-Alarm System Units UL1076 Proprietary Burglar Alarm Units and Systems UL1610 Central-Station Burglar-Alarm Units UL1635 Digital Alarm Communicator System Units
--------------	--

Approvals	CSFM
-----------	------

2000 Series Planning

Minimum Wire Length

A minimum of 5 ft. (1.5 m) of 22 AWG (0.8 mm) wire must be used when connecting devices (including keypads) mounted outside the enclosure to the +Aux terminal. A short on the +Aux terminal within 5 ft. (1.5 m) of the panel prevents the panel from operating correctly.

Maximum Wire Length

The maximum combined wire length for all devices connected to the Data and +Aux terminals is 500 ft. (152 m) of 22 AWG (0.8 mm) wire.

Fire and Fire/Burglary Requirements

Fire installations require a D132A Polarity Reversing Module or a D192C Notification Appliance Circuit Module. The alarm output for Fire or combined Fire/Burglary installations must be supervised. This can be accomplished using a D132A Polarity Reversing Module and compatible smoke detectors or using D192C Notification Appliance Circuit Module.

2000 Series Technical Specifications

Environmental Considerations	
Relative Humidity:	5% to 85% at +86°F (+30°C) non-condensing
Temperature (Operating):	+32°F to +122°F (0°C to +50°C)
Keypads	
Number of Keypads:	8 keypads maximum
Power Outputs	
Alarm Power:	1.35 A maximum at 10.2 VDC to 13.9 VDC output. Output may be steady or pulsed depending on programming.
Aux Power:	1 A
Continuous Power:	To comply with UL985 and UL864 for fire alarm applications, continuous power output is limited to 140 mA.
Total Power:	To comply with UL985 and UL864 for fire alarm applications, the total combined continuous and alarm current draw for the system during alarm conditions must be limited to 860 mA provided by the primary power supply (rectified AC).
Power Requirements	
Operating Voltage:	16.5 VDC
Secondary Voltage Input:	12 VDC, 7 Ah sealed lead-acid rechargeable battery
Telephone Interface	
	RJ31X or RJ38X with D164 phone cord

2000 Series Hardware Options

C900 Dialer Capture Module



Designed to link an alarm panel's digital dialer to a host computer and to switch the panel dialer to a telephone line in the event of a communications failure. Works with most modern control/communicators and uses a serial RS-232 data connection. Can be mounted to a 3-hole configuration using a D137 Mounting Bracket (purchased separately).

C900TTL-E Dialer Capture Module



Uses patented technology to connect an alarm panel's dialer to an Ethernet Local Area Network (LAN) or Wide Area Network (WAN). Connects between the Public Switched Telephone Network (PSTN) and the dialer's interface providing an RJ45 TCP/IP data output to the Ethernet HUB.

D101 Lock and Key Set

Optional lock and key set for use with the D2203 standard enclosure and the D8103 optional enclosure.



D110 Tamper Switch

Screw-on tamper switch fits standard and optional 2000 Series Control/Communicator enclosures. Shipped in packages of two.



D126 12 V, 7 Ah Battery

A fully rechargeable 12 VDC sealed lead-acid battery. Acts as a secondary power source.



D132A Polarity Reversing Module

Allows 2000 Series Control/Communicators to sound all smoke detectors connected to Point#1 when a single detector on the loop goes into alarm.



D133 Single Relay Module

Provides one Form "C" dry contact rated for 2 A @ 12 VDC.



D134 Dual Relay Module

Provides two Form "C" dry contacts each rated for 2 A @ 12 VDC.



D160 Telephone Cord

7 ft. (2 m) telephone cord with standard plug on one end.



D166 Telephone Jack

Standard Telco RJ31X Telephone Jack measuring approximately 2 in. (5 cm) square by 1 in. (2.5 cm) high.



D168A Remote Telephone Arming Module

A remote control module providing the user with the ability to arm or disarm a security system remotely or locally via a telephone. .



D169 2-Way Voice Verification Module

A 2-way audio system allowing for bi-directional, hands-free speech between live premises and the monitoring service operator.



D192C Notification Appliance Circuit Module

Supervises Class "B" notification circuits. Compatible with 12 VDC control/communicators. Provides 1.8 A per output at 12 or 24 VDC.



D202A/D202AW LED Command Centers



Feature a 13-LED display indicating system, user, and point status. The innovative orientation of the LEDs, keys, and point descriptions on the command center makes system operation intuitive.

D202A: off-white; D202AW: white

D1218 12 V, 18 Ah Battery



A fully rechargeable 12 VDC sealed lead-acid battery. Acts as a secondary power source.

D220A/D220AW LED Command Centers



Feature a 13-LED display indicating system, user, and point status. Three programmable emergency keys are provided and a built-in sounder emits several distinct tones.

D220A: off-white; D220AW: white

D1240 12 V, 4 Ah Battery



A fully rechargeable 12 VDC sealed lead-acid battery. Acts as a secondary power source.

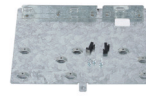
D222A/D222AW Text Command Centers



Features a 2-line, 32-character alphanumeric, easy-to-read, illuminated display showing system, user, and point status. Three programmable emergency keys and up to four hardwired expansion points are provided.

D222A: off-white; D222AW: white

D2402 Mounting Plate



Required for mounting 6000 Series Control/Communicators in D8103, D8108A, or D8109 enclosures.

D223A/D223AW Text Command Centers



Features a 2-line, 32-character alphanumeric, easy-to-read, illuminated display showing system, user, and point status. Three programmable emergency keys are provided.

D223A: off-white; D223AW: white

D8103 Universal Enclosure



18 Ga. (1.2 mm) gray, cold-rolled steel enclosure measuring (HxWxD) 16 in. x 16 in. x 3.5 in. (41 cm x 41 cm x 9 cm). Requires use of D2402 Mounting Plate.

D279A/D279W Independent Zone Control



Self-contained independent point control allows individual points to be armed and disarmed separately from the rest of the system. Includes 1 user-programmable passcode and built-in panic button. A single zone can be branched into 1 instant loop and 1 delayed loop. Can initiate opening and closing reports from a single control/communicator point. Includes built-in form "C" relay, entry delay buzzer, 1 delay loop LED, 1 instant loop LED and 1 armed LED.

D279A: off-white, D279AW: white

D8108A Attack Resistant Enclosure



Required for UL Listed Commercial Local Burglary applications. UL Listed for Central Station Fire, Local Fire, and Remote Station Fire applications. Lock and key set included. Requires use of D2402 Mounting Plate.

D8109 Fire Enclosure



18 Ga. (1.2 mm) red, cold-rolled steel enclosure measuring (HxWxD) 16 in. x 16 in. x 3.5 in. (41 cm x 41 cm x 9 cm). UL Listed for Central Station Fire, Local Fire, and Remote Station Fire applications. Lock and key set included. Requires use of D2402 Mounting Plate.

EK10 Easikey Door Controller

Controls one or two door readers, stores up to 99 users and the last five keys/cards used for display, and offers three access levels.



SC2104 Safecom Radio Communicator



Interfaces with an SC9000 Receiver to allow long-range telemetry communications for monitoring alarm panels at a remote customer site. Normally configured as an independent backup device for interface with the remote site's alarm panel. It monitors the alarm panel's telephone line for line faults and the alarm panel for contact open/close status for four inputs. It transmits line and/or contact status reports to the SAFECOM receiver at the central station. It has the same 2-way communications characteristics as the SC4000, but is not UL Listed, is not able to intercept and send alarm panel signals, and is not configured with any relay outputs.

SC3100 Safecom Radio Communicator



Interfaces with an SC9000 Receiver to allow long-range telemetry communications for monitoring alarm panels at a remote customer site. Normally configured as a stand-alone device for interface with the remote site's alarm panel. It intercepts all of the alarm panel signals, digitally encodes those signals, and transmits the encoded signals to the SAFECOM receiver at the central station. It has the same 2-way communications characteristics and receiving-and-sending functions and capabilities as the SC4000, but is not UL Listed and is not configured with inputs or output relays.

SC4000 Safecom Radio Communicator



Interfaces with an SC9000 Receiver to allow long-range telemetry communications for monitoring alarm panels at a remote customer site. Normally configured as a stand-alone device for interface with the remote site's alarm panel. It intercepts all of the alarm panel signals, digitally encodes those signals, and transmits the encoded signals to the SAFECOM receiver at the central station. It can monitor four inputs for normal, open, and short conditions. It also monitors its enclosure tamper switch for fault and restoral detection. It has four 2-position contact relay outputs that allow the central station operator to control the On/Off status of devices via radio command from the SC9000 computer.

2000 Series Premises Wireless Hardware Options

D208RF/D216RF Transmitter Receiver Expanders



The D208RF and D216RF Receiver Expanders receive alarms and supervisory signals from Learn Mode™ transmitters. They can be remotely connected to D2412U or D2212B panels on the keypad data bus. Two receivers can connect to one panel.

D208RF: 8-transmitter model,
D216RF: 16-transmitter model

Quik Bridge™ Learn Mode™ Loop Receiver



The Quick Bridge™ Learn Mode™ Loop Receivers can be placed throughout the protected area, including building interiors. Each receiver contains a radio receiver to detect the radio transmission from wireless devices. The receivers are compatible with the D2412U and D2212B panels.

Quik Bridge™ Learn Mode™ Repeater



The Quik Bridge™ Learn Mode™ Repeater is a dual-antenna receiver and transmitter which extends the distance a wireless device can be installed from the Quick Bridge™ Learn Mode™ loop receiver and the 2000 Series Control Panel. It adds power and flexibility to wireless security systems where distances are great.

Learn Mode™ Audio Glass Breakage Detector



The Learn Mode™ Audio Glass Breakage Detector detects and responds to sounds generated by breaking glass. Its Dual Technology audio discriminator circuitry provides coverage up to 25 ft. (7.6 m) away in any direction and makes it an ideal and cost saving solution for a room with numerous windows where several ordinary detectors would have to be installed.

Learn Mode™ Slimline Door/Window Sensors



The Learn Mode™ Slim Line Door/Window Sensors need only narrow mounting space to protect doors, windows, jewelry cases, gun cabinets and anything that opens and closes.
60-499-10-319.5: white,
60-499-11-319.5: brown

Learn Mode™ Glass Guard Sensors



The Glass Guard Sensors adhere to panes of glass and have a sensitivity radius of 5 ft. (1.5 m). They are ideal for big picture windows or large storefront glasses.

60-462-10-319.5: white,
60-462-11-319.5: brown

Learn Mode™ Fire Pull Station



Lifting up the clear shield and pressing the switch will activate the Fire Pull Station. Inserting and turning the special key at top will reset the fire pull station.

Learn Mode™ Door/Window Sensors with Reed and Magnet



The Learn Mode™ Door/Window Sensors with Reed and Magnet provide vertical or horizontal mounting on doors, windows, jewelry cases, gun cabinets and anything that opens and closes.

60-362-10-319.5: white,
60-362-11-319.5: brown

Learn Mode™ Freeze Sensor



The Learn Mode™ Freeze Sensor detects low temperatures that can cause freezing and bursting pipes. It is ideal for detecting failure in cold climates.

Learn Mode™ Long-Life Door/Window Sensors



The Learn Mode™ Long-Life Door/Window Sensors provide vertical or horizontal mounting on doors, windows, jewelry cases, gun cabinets and anything that opens and closes. A 10-year warranty is given on the supplied batteries.

60-641-95: white,
60-641-11-95: brown

Learn Mode™ Keyfobs



The 2-button and 4-button Keyfobs arm and disarm the system. They are used with the D2412U or D2212B panels and the Quik Bridge™ Learn Mode™ Loop Receiver.

60-606-319.5: 4-button keyfob,
60-607-319.5: 2-button keyfob

Learn Mode™ Micro Door/Window Sensors



The Learn Mode™ Micro Door/Window Sensors provide vertical or horizontal mounting on doors, windows, jewelry cases, gun cabinets and anything that opens and closes. They are the smallest sensors of their kind in the security industry.

60-688-95: white,
60-688-11-95: brown

Learn Mode™ Panic Sensors



The Panic Sensors are used to activate a 24-hour emergency alarm and can be hand-held or wall mounted.

60-458-10-319.5: single-button,
60-457-10-319.5: 2-button

Learn Mode™ Recessed Door/Window Sensors



The Learn Mode™ Recessed Door/Window Sensors are completely concealed when installed. Non-visible protection of door or window is provided for at least 8 years.

60-741-95: white,
60-741-11-95: brown

Learn Mode™ Pendant Panic Sensor



The Learn Mode™ Pendant Panic Sensor is activated by pressing a recessed button at the end of sensor. Its design prevents false alarms. The device may be worn around the neck or in a holster for added comfort and convenience.

Learn Mode™ Water-Resistant Pendant Panic Sensor



The Panic Sensor is activated by pressing a recessed button (designed to prevent false alarms) on the front of the sensor. You can wear the device on a belt using the included belt clip or around the neck with the included neckcord. You can wear the sensor while in the shower or in damp conditions.

Learn Mode™ Radio Frequency Sniffer



The Radio Frequency Sniffer emits a series of beeps when RF transmission is detected. It is compatible with all Learn Mode™ transmitters and can be worn on belt or purse strap when 13-131 Black Leather Holster is used additionally.

Learn Mode™ Rate-of-Rise Heat Sensors



The Rate-Of-Rise Heat Sensors detect danger in places where high heat normally occurs or where smoke or dust disables ordinary sensors, such as in kitchens, garages or attics. It distinguishes between danger and normality by sensing rapid temperature changes and extreme heat.

Learn Mode™ Shock Sensors



The Learn Mode™ Shock Sensor detects the opening of a window or a door with the same technology as door/window sensors. Additionally, they detect breaking glasses if Litton Shock Detectors are added.

60-886-95: white,
60-886-11-95: brown

Learn Mode™ Wireless Smoke Sensors



The Learn Mode™ Wireless Smoke Sensors provide photoelectric smoke detection. When detecting an alarm, the detector sounds an internal siren, flashes an LED rapidly and sends a wireless signal to the control panel.

60-506-319.5: sensor with two 9-V alkaline batteries,
60-506-319.5-LB: sensor with two 9 -V lithium batteries

Learn Mode™ Sound Sensor



The Learn Mode™ Sound Sensor detects breaking glass and provides, with its 360° coverage over 15 ft. (4.6 m), an ideal and cost saving solution for a room with numerous windows where several ordinary detectors would have to be installed.

D2412U Control/Communicator Package

Prod. ID

D2412U



Control panel with 6 points expandable to 24 and full data interface to UPLINK Model 1600 Cellular/Cellemetry Radio Transceiver.

The D2412U Control/Communicator Package includes:

- one D2412U Control/Communicator
- one D2203 Enclosure
- one D1640 Transformer

■ Features

- Full data interface to UPLINK™ Model 1600 Cellular/CellemetrySM Radio Transceiver
- Expandable to 24 points with hardwire and wireless point expansion modules

■ Basic Functions

Full data interface

The D2412U provides full data interface to the UPLINK™ Model 1600 Cellular/CellemetrySM Radio Transceiver allowing the system to communicate to a central station over both UPLINK and telephone networks.

Expandable to 24 points

The D2412U and D2212B Control/Communicators can be expanded to 24 points using any combination of hardwired points and/or wireless sensors. Any combination of the following expanders (four maximum) can be used:

- D208 Hardwire Expander supports up to eight hardwired points.
- D222A LCD Keypad/Expander supports up to four hardwired points.
- D208RF Receiver/Expander supports up to eight wireless sensors.
- D216RF Receiver/Expander supports up to sixteen wireless sensors.

Trademarks

UPLINK™ is a registered trademark of UPLINK Security, Inc.

CellemetrySM is a registered service mark of Cellemetry L.L.C.

Technical Specifications

Enclosure	
Material:	20 Ga. (1.0 mm) cold-rolled steel
Color:	Gray
Dimensions (HxWxD):	14.6 in x 13.4 in x 3.5 in (37 cm x 34 cm x 8.9 cm)
Points:	6 on-board; expandable to 24
Power Outputs	
Auxiliary Power:	1.0 A maximum at 10.2 VDC to 13.9 VDC for devices powered at the Aux ⁺ terminal (140 mA for Fire and combined Fire/Burglary systems).
Power Requirements	
Primary Voltage Input:	16.5 VAC, 40 VA provided by a Class 2, plug-in transformer

Hardware Options

D1640 Transformer



A 16 VAC, 40 VA transformer required to power the 2000 Series Expandable panels.

D208 Hardwire Expander

Provides up to eight hardwired points.

D208: module and enclosure

D208LC: module only



D208RF/D216RF Receiver Expanders



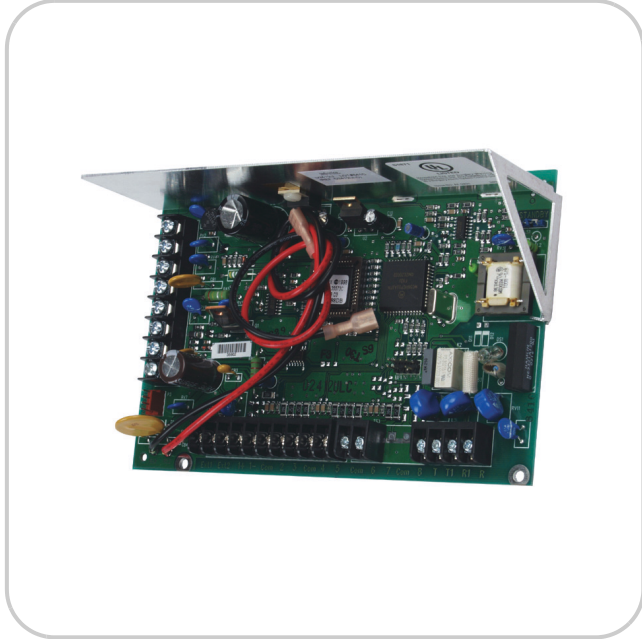
Receives alarm and supervisory signals from learn mode transmitters (wireless devices) and sends those signals to the D2212B or D2412U Control/Communicator through the keypad data bus.

D208RF: supports 8 wireless devices

D216RF: supports 16 wireless devices

D2412ULC Control/Communicator Package

Prod. ID	D2412ULC
----------	----------



Control panel with 6 points expandable to 24 and full data interface to UPLINK Model 1600 Cellular/Cellemetry Radio Transceiver.

The D2412ULC Control/Communicator Package includes one D2412U Control/Communicator

Note: LC means "less can (enclosure)"

The features, functions, patents and trademarks, technical specifications, and hardware options are identical to the D2412U Control/Communicator Package.

D2412ULT Control/Communicator Package

Prod. ID	D2412ULT
----------	----------



Control panel with 6 points expandable to 24 and full data interface to UPLINK Model 1600 Cellular/Cellemetry Radio Transceiver.

The D2412ULT Control/Communicator Package includes:

- one D2412U Control/Communicator
- one D2203 Enclosure

Note: LT means "less transformer"

The features, functions, patents and trademarks, technical specifications, and hardware options are identical to the D2412U Control/Communicator Package.

D2412UM Control/Communicator Package

Prod. ID D2412UM



Control panel with 6 points expandable to 24 and full data interface to UPLINK Model 1600 Cellular/Cellemetry Radio Transceiver.

The D2412UM Control/Communicator Package includes:

- one D2412U Control/Communicator
- one D2402 Mounting Skirt

Note: M means "with mounting skirt"

Order when using an optional enclosure.

The features, functions, patents and trademarks, technical specifications, and hardware options are identical to the D2412U Control/Communicator Package.

D2412UC202A Control/Communicator Package

Prod. ID D2412UC202A



Control panel with 6 points expandable to 24 and full data interface to UPLINK Model 1600 Cellular/Cellemetry Radio Transceiver.

The D2412UC202A Control/Communicator Package includes:

- one D2412U Control/Communicator
- one D2203 Enclosure
- one D1640 Transformer
- one D202A LED Keypad (off-white)

The features, functions, patents and trademarks, technical specifications, and hardware options are identical to the D2412U Control/Communicator Package.

D2412UC202AW Control/Communicator Package

Prod. ID D2412UC202AW

The Keypad for this package is white. All other components and functions of this package are identical to the D2412UC202A Control/Communicator Package.

The D2412UC202AW Control/Communicator Package includes:

- one D2412U Control/Communicator
- one D2203 Enclosure
- one D1640 Transformer
- one D202AW LED Keypad (white)

D2412UC220A Control/Communicator Package

Prod. ID D2412UC220A



Control panel with 6 points expandable to 24 and full data interface to UPLINK Model 1600 Cellular/Cellemetry Radio Transceiver.

The D2412UC220A Control/Communicator Package includes:

- one D2412U Control/Communicator
- one D2203 Enclosure
- one D1640 Transformer
- one D220A LED Keypad (off-white)

The features, functions, patents and trademarks, technical specifications, and hardware options are identical to the D2412U Control/Communicator Package.

D2412UC220AW Control/Communicator Package

Prod. ID D2412UC220AW

The Keypad for this package is white. All other components and functions of this package are identical to the D2412UC220A Control/Communicator Package.

The D2412UC220AW Control/Communicator Package includes:

- one D2412U Control/Communicator
- one D2203 Enclosure
- one D1640 Transformer
- one D220AW LED Keypad (white)

D2412UC222A Control/Communicator Package

Prod. ID D2412UC222A



Control panel with 6 points expandable to 24 and full data interface to UPLINK Model 1600 Cellular/Cellemetry Radio Transceiver.

The D2412UC222A Control/Communicator Package includes:

- one D2412U Control/Communicator
- one D2203 Enclosure
- one D1640 Transformer
- one D222A Text Keypad (off-white)

The features, functions, patents and trademarks, technical specifications, and hardware options are identical to the D2412U Control/Communicator Package.

D2412UC222AW Control/Communicator Package

Prod. ID D2412UC222AW

The Keypad for this package is white. All other components and functions of this package are identical to the D2412UC222A Control/Communicator Package.

The D2412UC222AW Control/Communicator Package includes:

- one D2412U Control/Communicator
- one D2203 Enclosure
- one D1640 Transformer
- one D222AW Text Keypad (white)

D2412UC223A Control/Communicator Package

Prod. ID D2412UC223A



Control panel with 6 points expandable to 24 and full data interface to UPLINK Model 1600 Cellular/Cellemetry Radio Transceiver.

The D2412UC223A Control/Communicator Package includes:

- one D2412U Control/Communicator
- one D2203 Enclosure
- one D1640 Transformer
- one D223A Text Keypad (off-white)

The features, functions, patents and trademarks, technical specifications, and hardware options are identical to the D2412U Control/Communicator Package.

D2412UC223AW Control/Communicator Package

Prod. ID D2412UC223AW

The Keypad for this package is white. All other components and functions of this package are identical to the D2412UC223A Control/Communicator Package.

The D2412UC223AW Control/Communicator Package includes:

- one D2412U Control/Communicator
- one D2203 Enclosure
- one D1640 Transformer
- one D223AW Text Keypad (white)

D2412UE Control/Communicator Package

Prod. ID D2412UE



Control panel with 6 points and full data interface to UPLINK Model 1600 Cellular/Cellemetry Radio Transceiver.

The D2412UE Control/Communicator Package includes:

- one D2412UE Control/Communicator
- one D2803 Enclosure
- one D1625 Transformer

■ Features

- Full data interface to UPLINK™ Model 1600 Cellular/CellemetrySM Radio Transceiver

■ Basic Functions

Full data interface

The D2412UE provides full data interface to the UPLINK™ Model 1600 Cellular/CellemetrySM Radio Transceiver allowing the system to communicate to a central station over both UPLINK and telephone networks.

■ Trademarks

UPLINK™ is a registered trademark of UPLINK Security, Inc.

CellemetrySM is a registered service mark of Cellemetry L.L.C.

■ Technical Specifications

Enclosure	
Material:	22 Ga. (0.8 mm) cold-rolled steel
Color:	Light Gray
Dimensions (HxWxD):	10 in. x 9 in. x 2.8 in. (25 cm x 23 cm x 7 cm)
Points	6 on-board
Power Outputs	
Auxiliary Power:	500 mA maximum at 10.2 VDC to 13.9 VDC for devices powered at the Aux ⁺ terminal (140 mA for Fire and combined Fire/Burglary systems).
Power Requirements	
Primary Voltage Input:	16.5 VAC, 25 VA provided by a Class 2, plug-in transformer

■ Hardware Options

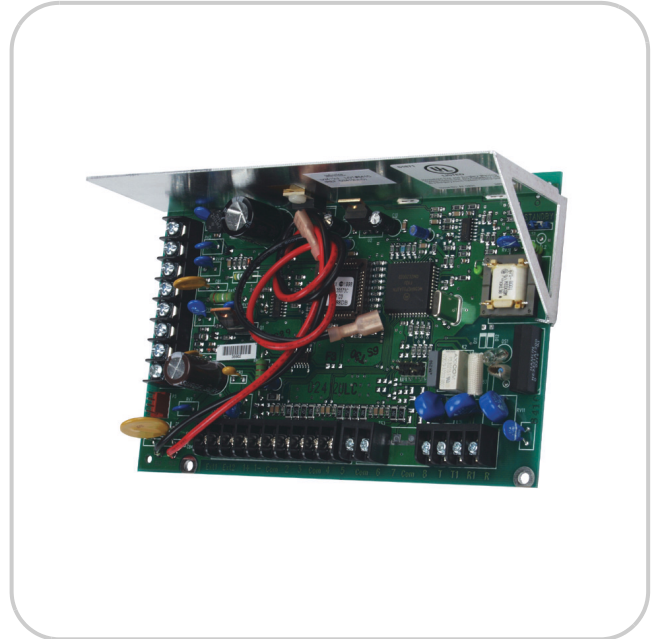
D1625 Transformer



A 16 VAC, 25 VA transformer required to power the 2000 Series Economy panels.

D2412UELC Control/Communicator Package

Prod. ID	D2412UELC
----------	-----------



Control panel with 6 points and full data interface to UPLINK Model 1600 Cellular/Cellemetry Radio Transceiver.

The D2412UELC Control/Communicator Package includes one D2412UE Control/Communicator

Note: LC means "less can (enclosure)"

The features, functions, patents and trademarks, technical specifications, and hardware options are identical to the D2412UE Control/Communicator Package.

D2412UFLT Control/Communicator Package

Prod. ID

D2412UFLT



Control panel with 6 points and full data interface to UPLINK Model 1600 Cellular/Cellemetry Radio Transceiver.

The D2412UFLT Control/Communicator Package includes:

- one D2412UE Control/Communicator
- one D2803 Enclosure

Note: LT means "less transformer"

The features, functions, patents and trademarks, technical specifications, and hardware options are identical to the D2412UE Control/Communicator Package.

D2412UEM Control/Communicator Package

Prod. ID

D2412UEM



Control panel with 6 points and full data interface to UPLINK Model 1600 Cellular/Cellemetry Radio Transceiver.

The D2412UEM Control/Communicator Package includes:

- one D2412UE Control/Communicator
- one D2402 Mounting Skirt

Note: M means "with mounting skirt"

Order when using an optional enclosure.

The features, functions, patents and trademarks, technical specifications, and hardware options are identical to the D2412UE Control/Communicator Package.

D2412UEC202A Control/ Communicator Package

Prod. ID D2412UEC202A



Control panel with 6 points and full data interface to UPLINK Model 1600 Cellular/Cellemetry Radio Transceiver.

The D2412UEC202A Control/Communicator Package includes:

- one D2412UE Control/Communicator
- one D2803 Enclosure
- one D1625 Transformer
- one D202A LED Keypad (off-white)

The features, functions, patents and trademarks, technical specifications, and hardware options are identical to the D2412UE Control/Communicator Package.

D2412UEC202AW Control/ Communicator Package

Prod. ID D2412UEC202AW

The Keypad for this package is white. All other components and functions of this package are identical to the D2412UEC202A Control/Communicator Package.

The D2412UEC202AW Control/Communicator Package includes:

- one D2412UE Control/Communicator
- one D2803 Enclosure
- one D1625 Transformer
- one D202AW LED Keypad (white)

D2412UEC220A Control/ Communicator Package

Prod. ID D2412UEC220A



Control panel with 6 points and full data interface to UPLINK Model 1600 Cellular/Cellemetry Radio Transceiver.

The D2412UEC220A Control/Communicator Package includes:

- one D2412UE Control/Communicator
- one D2803 Enclosure
- one D1625 Transformer
- one D220A LED Keypad (off-white)

The features, functions, patents and trademarks, technical specifications, and hardware options are identical to the D2412UE Control/Communicator Package.

D2412UEC220AW Control/ Communicator Package

Prod. ID D2412UEC220AW

The Keypad for this package is white. All other components and functions of this package are identical to the D2412UEC220A Control/Communicator Package.

The D2412UEC220AW Control/Communicator Package includes:

- one D2412UE Control/Communicator
- one D2803 Enclosure
- one D1625 Transformer
- one D220AW LED Keypad (white)

D2412UEC222A Control/ Communicator Package

Prod. ID D2412UEC222A



Control panel with 6 points and full data interface to UPLINK Model 1600 Cellular/Cellemetry Radio Transceiver.

The D2412UEC222A Control/Communicator Package includes:

- one D2412UE Control/Communicator
- one D2803 Enclosure
- one D1625 Transformer
- one D222A Text Keypad (off-white)

The features, functions, patents and trademarks, technical specifications, and hardware options are identical to the D2412UE Control/Communicator Package.

D2412UEC222AW Control/ Communicator Package

Prod. ID D2412UEC222AW

The Keypad for this package is white. All other components and functions of this package are identical to the D2412UEC222A Control/Communicator Package.

The D2412UEC222AW Control/Communicator Package includes:

- one D2412UE Control/Communicator
- one D2803 Enclosure
- one D1625 Transformer
- one D222AW Text Keypad (white)

D2412UEC223A Control/ Communicator Package

Prod. ID D2412UEC223A



Control panel with 6 points and full data interface to UPLINK Model 1600 Cellular/Cellemetry Radio Transceiver.

The D2412UEC223A Control/Communicator Package includes:

- one D2412UE Control/Communicator
- one D2803 Enclosure
- one D1625 Transformer
- one D223A Text Keypad (off-white)

The features, functions, patents and trademarks, technical specifications, and hardware options are identical to the D2412UE Control/Communicator Package.

D2412UEC223AW Control/ Communicator Package

Prod. ID D2412UEC223AW

The Keypad for this package is white. All other components and functions of this package are identical to the D2412UEC223A Control/Communicator Package.

The D2412UEC223AW Control/Communicator Package includes:

- one D2412UE Control/Communicator
- one D2803 Enclosure
- one D1625 Transformer
- one D223AW Text Keypad (white)

D2212B Control/Communicator Package

Prod. ID D2212B



Control panel with 8 points expandable to 24.

The D2212B Control/Communicator Package includes:

- one D2212B Control/Communicator
- one D2203 Enclosure
- one D1640 Transformer

■ Features

- Expandable to 24 points with hardwire and wireless point expansion modules
- Uses 4x2 Pulse or Modem IIIa² communication format

■ Basic Functions

Expandable to 24 points

The D2412U and D2212B Control/Communicators can be expanded to 24 points using any combination of hardwired points and/or wireless sensors. Any combination of the following expanders (four maximum) can be used:

- D208 Hardwire Expander supports up to eight hardwired points.
- D222A LCD Keypad/Expander supports up to four hardwired points.
- D208RF Receiver/Expander supports up to eight wireless sensors.
- D216RF Receiver/Expander supports up to sixteen wireless sensors.

Choice of communication format

The D2212B Control/Communicator can send reports in either the 4x2 Pulse or the Modem IIIa² communication format. This expands the system's communication capabilities.

■ Technical Specifications

Enclosure

Material:	20 Ga. (1.0 mm) cold-rolled steel
Color:	Gray
Dimensions (HxWxD):	14.6 in x 13.4 in x 3.5 in (37 cm x 34 cm x 8.9 cm)

Points: 8 on-board; expandable to 24

Power Outputs

Auxiliary Power: 1.0 A maximum at 10.2 VDC to 13.9 VDC for devices powered at the Aux⁺ terminal (140 mA for Fire and combined Fire/Burglary systems).

Power Requirements

Primary Voltage Input: 16.5 VAC, 40 VA provided by a Class 2, plug-in transformer

■ Hardware Options

D1640 Transformer

A 16 VAC, 40 VA transformer required to power the 2000 Series Expandable panels.



D208 Hardwire Expander

Provides up to eight hardwired points.

D208: module and enclosure

D208LC: module only



D208RF/D216RF Receiver Expanders

Receives alarm and supervisory signals from learn mode transmitters (wireless devices) and sends those signals to the D2212B or D2412U Control/Communicator through the keypad data bus.

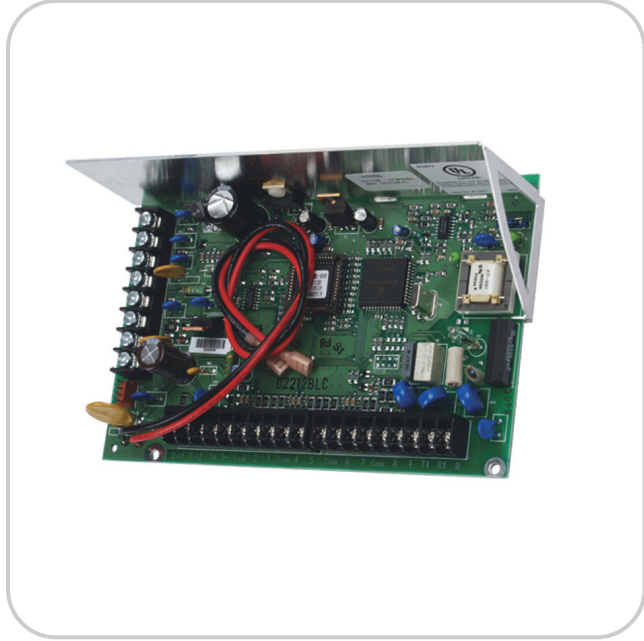
D208RF: supports 8 wireless devices

D216RF: supports 16 wireless devices



D2212BLC Control/Communicator Package

Prod. ID D2212BLC



Control panel with 8 points expandable to 24.

The D2212BLC Control/Communicator Package includes one D2212B Control/Communicator

Note: LC means "less can (enclosure)"

The features, functions, technical specifications, and hardware options are identical to the D2212B Control/Communicator Package.

D2212BLT Control/Communicator Package

Prod. ID D2212BLT



Control panel with 8 points expandable to 24.

The D2212BLT Control/Communicator Package includes:

- one D2212B Control/Communicator
- one D2203 Enclosure

Note: LT means "less transformer"

The features, functions, technical specifications, and hardware options are identical to the D2212B Control/Communicator Package.

D2212BM Control/Communicator Package

Prod. ID	D2212BM
----------	---------



Control panel with 8 points expandable to 24.

The D2212BM Control/Communicator Package includes:

- one D2212B Control/Communicator
- one D2402 Mounting Skirt

Note: M means "with mounting skirt"

Order when using an optional enclosure.

The features, functions, technical specifications, and hardware options are identical to the D2212B Control/Communicator Package.

D2212BC202A Control/Communicator Package

Prod. ID	D2212BC202A
----------	-------------



Control panel with 8 points expandable to 24.

The D2212BC202A Control/Communicator Package includes:

- one D2212B Control/Communicator
- one D2203 Enclosure
- one D1640 Transformer
- one D202A LED Keypad (off-white)

The features, functions, technical specifications, and hardware options are identical to the D2212B Control/Communicator Package.

D2212BC202AW Control/Communicator Package

Prod. ID	D2212BC202AW
----------	--------------

The Keypad for this package is white. All other components and functions of this package are identical to the D2212BC202A Control/Communicator Package.

The D2212BC202AW Control/Communicator Package includes:

- one D2212B Control/Communicator
- one D2203 Enclosure
- one D1640 Transformer
- one D202AW LED Keypad (white)

D2212BC220A Control/Communicator Package

Prod. ID D2212BC220A



Control panel with 8 points expandable to 24.

The D2212BC220A Control/Communicator Package includes:

- one D2212B Control/Communicator
- one D2203 Enclosure
- one D1640 Transformer
- one D220A LED Keypad (off-white)

The features, functions, technical specifications, and hardware options are identical to the D2212B Control/Communicator Package.

D2212BC220AW Control/Communicator Package

Prod. ID D2212BC220AW

The Keypad for this package is white. All other components and functions of this package are identical to the D2212BC220A Control/Communicator Package.

The D2212BC220AW Control/Communicator Package includes:

- one D2212B Control/Communicator
- one D2203 Enclosure
- one D1640 Transformer
- one D220AW LED Keypad (white)

D2212BC222A Control/Communicator Package

Prod. ID D2212BC222A



Control panel with 8 points expandable to 24.

The D2212BC222A Control/Communicator Package includes:

- one D2212B Control/Communicator
- one D2203 Enclosure
- one D1640 Transformer
- one D222A Text Keypad (off-white)

The features, functions, technical specifications, and hardware options are identical to the D2212B Control/Communicator Package.

D2212BC222AW Control/Communicator Package

Prod. ID D2212BC222AW

The Keypad for this package is white. All other components and functions of this package are identical to the D2212BC222A Control/Communicator Package.

The D2212BC222AW Control/Communicator Package includes:

- one D2212B Control/Communicator
- one D2203 Enclosure
- one D1640 Transformer
- one D222AW Text Keypad (white)

D2212BC223A Control/Communicator Package

Prod. ID D2212BC223A



Control panel with 8 points expandable to 24.

The D2212BC223A Control/Communicator Package includes:

- one D2212B Control/Communicator
- one D2203 Enclosure
- one D1640 Transformer
- one D223A Text Keypad (off-white)

The features, functions, technical specifications, and hardware options are identical to the D2212B Control/Communicator Package.

D2212BC223AW Control/Communicator Package

Prod. ID D2212BC223AW

The Keypad for this package is white. All other components and functions of this package are identical to the D2212BC223A Control/Communicator Package.

The D2212BC223AW Control/Communicator Package includes:

- one D2212B Control/Communicator
- one D2203 Enclosure
- one D1640 Transformer
- one D223AW Text Keypad (white)

D2212BE Control/Communicator Package

Prod. ID D2212BE



Control panel with 8 points.

The D2212BE Control/Communicator Package includes:

- one D2212BE Control/Communicator
- one D2803 Enclosure
- one D1625 Transformer

■ Features

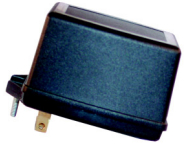
- Uses 4/2 Pulse or Modem IIIa² communication format

■ Technical Specifications

Enclosure	
Material:	22 Ga. (0.8 mm) cold-rolled steel
Color:	Light Gray
Dimensions (HxWxD):	10 in. x 9 in. x 2.8 in. (25 cm x 23 cm x 7 cm)
Points	8 on-board
Power Outputs	
Auxiliary Power:	500 mA maximum at 10.2 VDC to 13.9 VDC for devices powered at the Aux ⁺ terminal (140 mA for Fire and combined Fire/Burglary systems).
Power Requirements	
Primary Voltage Input:	16.5 VAC, 25 VA provided by a Class 2, plug-in transformer

■ Hardware Options

D1625 Transformer



A 16 VAC, 25 VA transformer required to power the 2000 Series Economy panels.

D2212BELC Control/Communicator Package

Prod. ID

D2212BELC



Control panel with 8 points.

The D2212BELC Control/Communicator Package includes:

- one D2212BE Control/Communicator

Note: LC means "less can (enclosure)"

The features, technical specifications, and hardware options are identical to the D2212BE Control/Communicator Package.

D2212BELT Control/Communicator Package

Prod. ID

D2212BELT



Control panel with 8 points.

The D2212BELT Control/Communicator Package includes:

- one D2212BE Control/Communicator
- one D2803 Enclosure

Note: LT means "less transformer"

The features, technical specifications, and hardware options are identical to the D2212BE Control/Communicator Package.

D2212BEM Control/Communicator Package

Prod. ID

D2212BEM



Control panel with 8 points.

The D2212BEM Control/Communicator Package includes:

- one D2212BE Control/Communicator
- one D2402 Mounting Skirt

Note: M means "with mounting skirt"

Order when using an optional enclosure.

The features, technical specifications, and hardware options are identical to the D2212BE Control/Communicator Package.

D2212BEC202A Control/ Communicator Package

Prod. ID D2212BEC202A



Control panel with 8 points.

The D2212BEC202A Control/Communicator Package includes:

- one D2212BE Control/Communicator
- one D2803 Enclosure
- one D1625 Transformer
- one D202A LED Keypad (off-white)

The features, technical specifications, and hardware options are identical to the D2212BE Control/Communicator Package.

D2212BEC202AW Control/ Communicator Package

Prod. ID D2212BEC202AW

The Keypad for this package is white. All other components and functions of this package are identical to the D2212BEC202A Control/Communicator Package.

The D2212BEC202AW Control/Communicator Package includes:

- one D2212BE Control/Communicator
- one D2803 Enclosure
- one D1625 Transformer
- one D202AW LED Keypad (white)

D2212BEC220A Control/ Communicator Package

Prod. ID D2212BEC220A



Control panel with 8 points.

The D2212BEC220A Control/Communicator Package includes:

- one D2212BE Control/Communicator
- one D2803 Enclosure
- one D1625 Transformer
- one D220A LED Keypad (off-white)

The features, technical specifications, and hardware options are identical to the D2212BE Control/Communicator Package.

D2212BEC220AW Control/ Communicator Package

Prod. ID D2212BEC220AW

The Keypad for this package is white. All other components and functions of this package are identical to the D2212BEC220A Control/Communicator Package.

The D2212BEC220AW Control/Communicator Package includes:

- one D2212BE Control/Communicator
- one D2803 Enclosure
- one D1625 Transformer
- one D220AW LED Keypad (white)

D2212BEC222A Control/ Communicator Package

Prod. ID D2212BEC222A



Control panel with 8 points.

The D2212BEC222A Control/Communicator Package includes:

- one D2212BE Control/Communicator
- one D2803 Enclosure
- one D1625 Transformer
- one D222A Text Keypad (off-white)

The features, technical specifications, and hardware options are identical to the D2212BE Control/Communicator Package.

D2212BEC222AW Control/ Communicator Package

Prod. ID D2212BEC222AW

The Keypad for this package is white. All other components and functions of this package are identical to the D2212BEC222A Control/Communicator Package.

The D2212BEC222AW Control/Communicator Package includes:

- one D2212BE Control/Communicator
- one D2803 Enclosure
- one D1625 Transformer
- one D222AW Text Keypad (white)

D2212BEC223A Control/ Communicator Package

Prod. ID D2212BEC223A



Control panel with 8 points.

The D2212BEC223A Control/Communicator Package includes:

- one D2212BE Control/Communicator
- one D2803 Enclosure
- one D1625 Transformer
- one D223A Text Keypad (off-white)

The features, technical specifications, and hardware options are identical to the D2212BE Control/Communicator Package.

D2212BEC223AW Control/ Communicator Package

Prod. ID D2212BEC223AW

The Keypad for this package is white. All other components and functions of this package are identical to the D2212BEC223A Control/Communicator Package.

The D2212BEC223AW Control/Communicator Package includes:

- one D2212BE Control/Communicator
- one D2803 Enclosure
- one D1625 Transformer
- one D223AW Text Keypad (white)

